



GRP BUILT OFF-SITE.
SAVE TIME ON-SITE.

COPEKING®

Simply the safest and quickest coping to install.



COPEKING® - GRP Coping System

Solid and sturdy, lightweight and safe

Why Stormking?

- Range of colours, sizes and Single or Double Weathering to choose from.
- B.R.E. Wind Tested (Certificate No. 235-309)
- Patented Technology (Patent No. GB2445357)
- Free Site Delivery*

COPEKING® is manufactured to look and feel like stone, comprising of a realistic surface that are reinforced with dense foam, for superior aesthetic appearance. Stormking's COPEKING® products comprise of a patented lightweight, time saving, clip-on system, making the installation process simple, stress-free and quick.

COPEKING® can be installed 75% faster than traditional coping and is a cost-effective alternative to real stone.



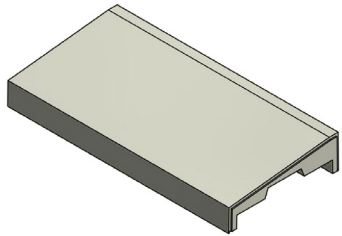
COPEKING® - GRP Coping System

Options

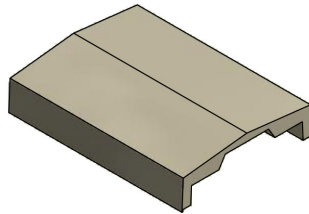
COPEKING® is available in either Single or Double Weathered stone effect, in a variety of standard colours, with pre-made mitres, angled corners, T-pieces and left and right stop ends, to not only match your buildings design, but make your install as economical as possible.

Choose from Single or Double Weathered profiles to perfectly match your buildings requirements:

Single Weathered:



Double Weathered:



Standard Colour Options:

Bath Stone

(RAL 1001)

York Stone

(RAL 1002)

Portland Stone

(RAL 9002)

Extended colour choices, using the RAL colour system, are available. Please contact sales@stormking.co.uk for more information.



Installation Process

COPEKING® installation is efficient and effective:

Step 1.

Simple clip system to fix copings in place easily.



Step 2.

Clip on pre mitered sections and stop ends as necessary.



Step 3.

Moulded for superior finish.



Step 4.

An incredible final result.



Why use COPEKING®?

- COPEKING® is virtually maintenance free being a dry fit fixing system, which incorporates state of the art engineering with modern lightweight materials.
- COPEKING® has been designed to be cost-effective and simple to install, reducing the number of specialist skills needed onsite.
- COPEKING® is manufactured off-site and made-to-order, delivered when you need it, ensuring no materials are wasted, saving you time onsite.
- COPEKING® is adaptable and can be used on timber frames or paneled walling systems, for ease of installation.
- COPEKING® is produced using modern manufacturing methods, allowing it to be a lightweight alternative to traditional stone coping and safer to install at height.

COPEKING® - GRP COPING SYSTEM

We are Stormking

Stormking is the leading brand of GRP building components to the house building and construction industry in the UK.

Stormking was founded in 1985 and has worked hard to become and maintain being the market leader through its range of market leading products, all manufactured off-site, to save you time on-site!

Customers can have extra confidence when placing an order with Stormking, being part of Epwin Group PLC, one of the UKs largest manufacturers of extruded building products.

Specifying Stormking products is made easier with the support of our in-house Design and Technical Teams, who can assist with any design related questions or queries. GRP is a modern manufacturing process, supported by state-of-the-art manufacturing and design technologies, providing design freedom to clients and customers.

Stormking incorporates over 500,000 sq ft of modern manufacturing methods, spread over 5 sites, which allows for large-scale manufacturing capacities.

Stormking holds several industry recognised accreditations. As the only GRP manufacturer to hold BBA certificates across its product portfolio, every product line is audited annually, ensuring our customers can be confident of receiving a quality product, every time.





GRP BUILT OFF-SITE.
SAVE TIME ON-SITE.

www.stormking.co.uk

Contact our friendly sales team:

**01827 311100 or
sales@stormking.co.uk**

**Stormking Plastics Limited, Amington Point,
Sandy Way, Amington Industrial Estate,
Tamworth, Staffordshire B77 4ED**

Due to variations in the photographic and printer processes, colours shown in this brochure may vary from the actual product. We reserve the right to change the specification of these products without prior notification. E&OE.

*Free nationwide delivery, excludes highlands and islands.

