



GRP BUILT OFF-SITE.
SAVE TIME ON-SITE.

Experts in GRP Building Components

Explore our range.



www.stormking.co.uk

GRP Door Canopies

As well as protecting people from the weather as they enter and leave their properties, our GRP door canopy systems offer an alternative to traditional building materials with a lightweight, quick-to-install and virtually maintenance-free product.

All Stormking Door Canopy systems are factory finished, come as complete units with full internal timber frames and are delivered to the site shrink-wrapped, ready for installation. Designed to be different, Stormking GRP Entrance Canopies can be manufactured in a range of styles, sizes and colours.

GRP Apex Door Canopy



GRP Decorative Flat Door Canopy



GRP Mono Door Canopy



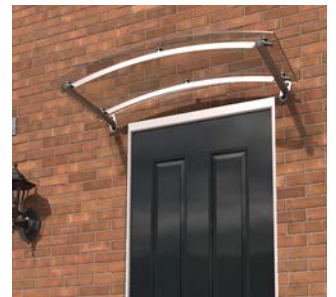
GRP Flat Door Canopy



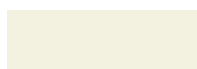
GRP Curved Door Canopy



Clearlight Canopy Polycarbonate



GRP Door Canopy Standard Colour Options



Cream*
(RAL 9001)



White
(RAL 9016)



Ivory/Cream
(RAL 1015)



Slate/Lead Grey
(RAL 7015)



Anthracite Grey
(RAL 7016)



Black
(RAL 9005)

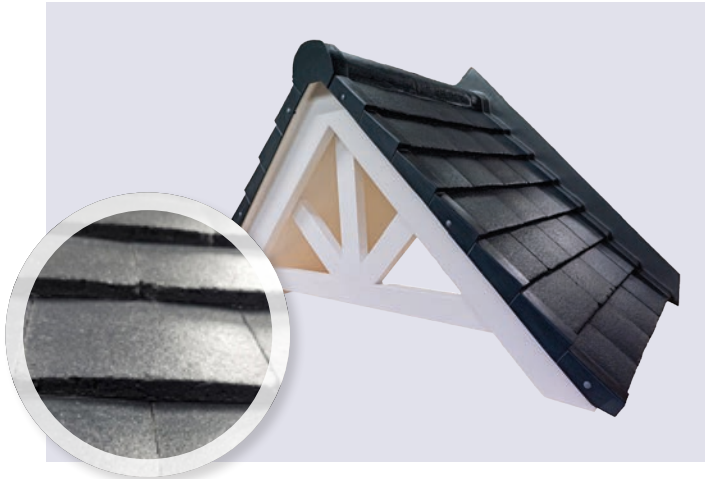
Please note all colours are for reference only and may look different on the finished product. *Not all colours are available in Recplas.

Bespoke sizing & colour options are available



GRP Door Canopy Finish Options

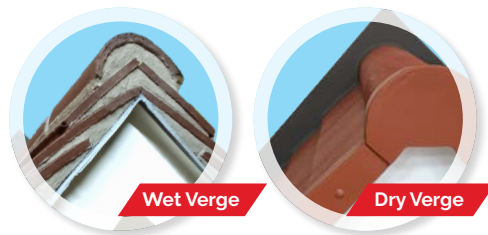
We have a Premium GRP Tile Effect finish, Standard GRP Tile Effect finish, GRP Lead Effect Finish or a Trussed product ready for on-site Tiling.



Premium GRP Tile Effect Finish

Available on our Apex Door Canopies and Mono Pitched Door Canopies.

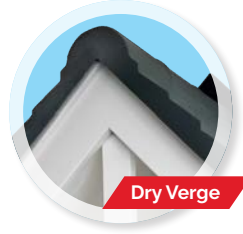
Verge option:



GRP Tile Effect Finish

Available on our range of Door Canopies, Dormers, Bay Window Canopies.

Verge option:



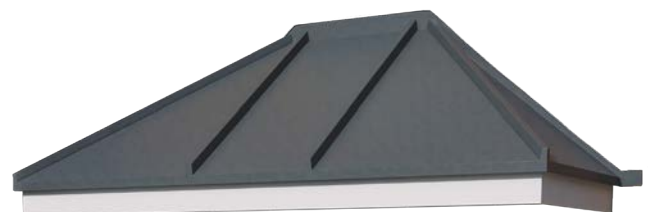
Trussed Ready to Tile Finish

Available on our range of Door Canopies, Dormers, Bay Window Canopies



GRP Lead Effect Finish

Available on our range of Door Canopies, Dormers, Bay Window Canopies



Bay Window Roof Range

Stormking Bay Window Roofs are available in the following styles - Flat, Curved, Mono, Oriel, Pitched and bespoke with a GRP reproduction Tile, GRP Lead Effect or Ready-to-Tile Trussed options.

All Stormking Bay Window Roof products have been designed to be easily and quickly installed, compared to traditionally built and installed bay windows. Stormking Bay Window Roofs have been engineered for on-site handling reducing the need for independent scaffolding requirements or specialist lifting equipment. Our Bay Window Roof products are BBA certified and independently assessed to UKAS standards. Explore our range of Bay Window Roofs below.

GRP Flat Bay Window Roof



GRP Mono Bay Window Roof



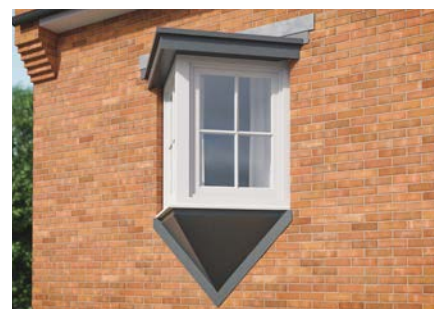
GRP Pitched Bay Window Roof



GRP Curved Bay Window Roof

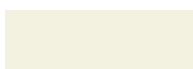


GRP Oriel Bay Window Roof



Bespoke sizing & colour options are available

GRP Bay Window Roof Standard Colour Options



Cream
(RAL 9001)



White
(RAL 9016)



Ivory/Cream
(RAL 1015)



Slate/Lead Grey
(RAL 7015)



Anthracite Grey
(RAL 7016)



Black
(RAL 9005)

Please note all colours are for reference only and may look different on the finished product.

sales@stormking.co.uk

4



Wide product range



Free site delivery*



BBA Certified

Dormer Range

Adding a GRP Roof Dormer to a newly built property can give it instant kerb appeal. Stormkings' market leading range of dormers offers an alternative to traditional building materials, with a product that is lightweight, quick to install and virtually maintenance free. Available in a range of styles to suit various roof pitches and window sizes. Stormkings' BBA approved dormer systems are built off site to save time on site.

*available as WARMADORMA option - Part L building regulations compliant.

Full GRP Apex Dormer Roof*

Available in Tile effect or Trussed for on-site tile finishes



Full GRP Flat Dormer Roof*



GRP Hipped Dormer Roof - Tile effect or Trussed*



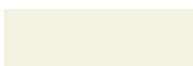
GRP Half Eaves Dormer Roofs*



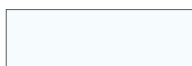
Bespoke Dormer Roofs*



GRP Dormer with Fascia Colour Options



Cream
(RAL 9001)



White
(RAL 9016)



Ivory/Cream
(RAL 1015)



Slate/Lead Grey
(RAL 7015)



Anthracite Grey
(RAL 7016)



Black
(RAL 9005)

Bespoke sizing & colour options are available

GRP Dormer with Apex Roof Range GRP Tile Effect Colour Options - other colour options available



Stormking
Terracotta



Stormking
Smooth Brown



Stormking
Smooth Red

Please note all colours are for reference only and may look different on the finished product.

SmartStack Range

SmartStack from Stormking is an extensive range of prefabricated GRP chimney stacks. These chimney stacks are lightweight, easy to install and require no specialist trades. Our BBA approved SmartStack GRP chimneys' are available in a range of styles, sizes and come complete with lead flashings.

SmartStack GRP Brick Effect Chimney



SmartStack GRP Render Effect Chimney



SmartStack GRP Stone Effect Chimney



SmartStack Brick Slip Chimney



SmartStack GRP Render Onsite Chimney



SmartStack Stone Slip Chimney



COPEKING® GRP Coping Systems Range

COPEKING® reproduction GRP stone effect coping is manufactured to look and feel like stone, with a realistic surface that is internally reinforced with dense foam, for superior aesthetic appearance. Stormking's COPEKING® reproduction stone coping has a patented lightweight, time saving, clip-on system, making the installation process simple, stress-free and quick.

Single Weathered GRP Coping



Single Weathered stone effect GRP COPEKING® is available in a variety of standard colours, with pre-formed mitres, angled corners, T-pieces and left and right stop ends, to not only match your buildings design, but make your install as economical as possible.

To suit wall widths - 250mm to 300mm, 300mm to 350mm, 350mm to 400mm.

Double Weathered GRP Coping



Double Weathered stone effect GRP COPEKING® is available in a variety of standard colours, with pre-formed mitres, angled corners, T-pieces and left and right stop ends, to not only match your buildings design, but make your install as economical as possible.

COPEKING® - Weathered Coping Colour Options



Bath Stone
(RAL 1001)



Portland Stone
(RAL 9002)



York Stone
(RAL 1002)



Ivory/Cream
(RAL 1015)



Anthracite Grey
(RAL 7016)



Slate Grey
(RAL 7043)

Please note all colours are for reference only and may look different on the finished product.

GRP Columns, Posts and Porticoes Range

Stormking has vast experience in manufacturing GRP Columns, Posts and Porticoes. Our techniques have been honed over the years so not only do our GRP columns, post and porticoes offer all the benefits of off-site manufacture, they seamlessly blend with traditional build elements.



GRP Porticoes & Columns

Our range of GRP porticoes and columns are available in a range of styles and sizes which can be colour matched to replicate natural materials, in a stone or smooth effect.



GRP Pilasters & GRP 'Recplas'

Our range of door pilasters are available in various styles, door heights, widths and are pre-finished for ease of installation.

Our GRP and 'Recplas' porch posts are a lightweight alternative to traditional materials.



GRP Moulded 'Recplas' Steel Brackets & GRP Kneelers

Our GRP moulded or recplas brackets are a lightweight alternative to traditional timber brackets.

Available in a range of styles and sizes which complement our Entrance Door Canopy & Door Head ranges.

*Purchased separately or in pairs.



GRP Substation Products

Stormking's range of GRP Substation products include Roofs and Doors which have been engineered to meet the current technical requirements. With safety in mind these GRP substation products are built using reinforced GRP and have explosion relief capability. To find out more about the technical specification of these substation roofs and doors contact our in-house technical team.

GRP Substation Roofs



GRP Substation Doors



GRP Roof Accessories

GRP Roof Towers



GRP Finials*



*Only available in black or white and in 1 metre lengths.

GRP Bin Store Door Ranges

Single GRP Bin Store Doors



Double GRP Bin Store Doors



Why choose Stormking?

Stormking is the leading brand of **GRP building components** to the house building and construction industry in the UK.

Supporting the construction industry

With GRP manufacturing over 5 sites (500,000 sq ft) in the UK, Stormking has the ability to meet all capacity requirements from a wide range of customers.



High-quality products

Stormking aims to provide its customers with the very best GRP products to ensure maximum efficiency, quality and value. To achieve this Stormking continually innovates its production methods and its product range, with a strong emphasis on researching the best manufacturing processes and developing new products for our customers. Our products and manufacturing processes are all underpinned by our commitment to quality and the quality processes we employ to accomplish this.

Wide range of solutions

Using state-of-the industry Building Informational Modelling (BIM) technologies allows Stormking to design, render and simulate GRP products before they are put into production.

Made in the Britain

All our GRP manufacturing is performed at one of our 5 sites located in Great Britain.



Technical Expertise

Stormking offers a full design and build service with technical expertise and support throughout the whole process.

Accreditations



ISO 14001



ISO 9001



Innovation

Is crucial to the continuing success of any company, Stormking is consistently leading the way in terms of innovation, applying new manufacturing techniques to exceed market regulations and service levels of a demanding, ever-changing industry.

As the leading GRP manufacturer for house builders in the UK, with an enviable range of products and manufacturing capacity, we are always investing in new methods of production, investing in our people and applying new processes. With the ability to fabricate bespoke sizes and provide colours to suit any development needs you may require, Stormking can provide you with a totally unique solution for all your GRP needs.



Corporate Social Responsibility

Stormking are committed to continually improving our performance as a socially responsible company and work with our staff, our clients and our subcontractors to maintain this approach.

As our activities are not carried out in isolation, it is our responsibility to consider the effect we as a company and individuals have on the wider community and other stakeholders. As an SME (but being part of the Epwin Group Plc) we are able to react quickly and work closely with our partners and the communities in which we operate to minimise the impact made by our presence. We do this by conducting ourselves in a professional manner, ensuring we are approachable, understanding, reactive and ethical.

Stormking's core values are reflected in its approach to Corporate Social Responsibility ensuring that these beliefs are conveyed directly to our clients, employees, supply chain and those people living and working amongst the places in which we are contracted to work.

Stormking's Core Values:

- Co-operation
- Honesty and openness
- Integrity
- Respect
- Creativity
- Diversity





GRP BUILT OFF-SITE.
SAVE TIME ON-SITE.

Contact our friendly sales team:

**01827 311100 or
sales@stormking.co.uk**

Customer Care Enquiries:

customercare@stormking.co.uk

Account Enquiries:

accounts@stormking.co.uk



**Stormking Plastics Limited, Amington Point,
Sandy Way, Amington Industrial Estate,
Tamworth, Staffordshire B77 4ED**

Part of the Epwin Group Plc



www.stormking.co.uk

Due to variations in the photographic and printer processes, colours shown in this brochure may vary from the actual product. We reserve the right to change the specification of these products without prior notification. E&OE.

*Free nationwide delivery, excludes highlands and islands.



ISO 14001



ISO 9001

