

Fixing

- The Door Canopy must be installed by a qualified fitter under the supervision of a person responsible for technical matters on site.
- The RecPlast Gallows brackets or moulded GRP Kneelers are fixed to the wall in two places with StormFix 120 fixings and screw fixed to the canopy soffit in two places - The brackets are NOT to be used as the main structural support for the canopy.
- The rear GRP fixing/flashing flange is fixed to the external wall with StormFix 80 fixings at a maximum of 450mm centres, or other suitable alternative, as specified by structural engineer.



For Canopies up to a maximum 750mm projection.

- These instructions do not absolve the installer of the responsibility to check the chosen fixings are compatible with the wall construction. All fixings are to be installed in strict accordance with the manufacturer's instructions.
- The upstand must be over flashed in lead or mastic sealed.

Handling

- Mouldings can usually be carried manually.
- If mechanical handling equipment is used, always use suitable battens or bearers to protect the product.
- Remove the protective packaging only when fixing is imminent.
- Care should be taken not to damage the surface of the GRP.

Storage

- Always store the roof on its back i.e. with the fixing flange face downwards, covered and dry.
- If stored externally, do not expose to direct sunlight whilst inside the packaging.

Maintenance

- GRP is low maintenance and will not require regular painting or decorating.
- To maintain its finish we advise cleaning periodically using an ammonia free detergent solution. Abrasive cleaners, wire wool or scourers should not be used as they may scratch the finished surface.
- Small areas of accidental site damage can be easily repaired, kits are available from Stormking for a small charge.

Technical helpline:

01827 311100

www.stormking.co.uk



STORMKING[®]

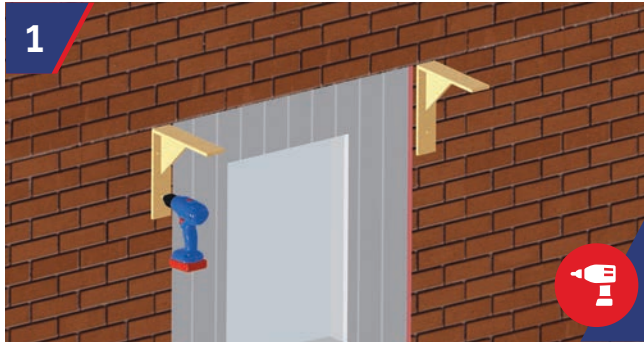
GRP BUILT OFF-SITE.
SAVE TIME ON-SITE.

ENTRANCE CANOPIES

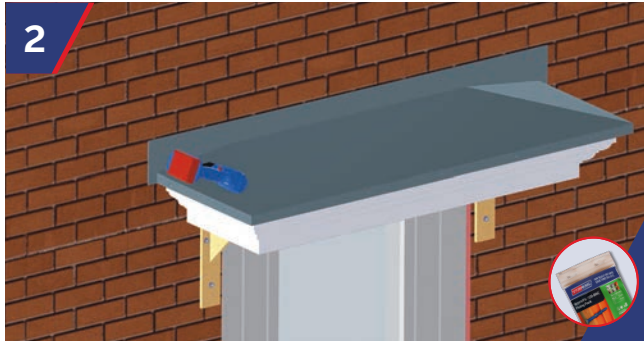
GRP Flat

Installation Instructions

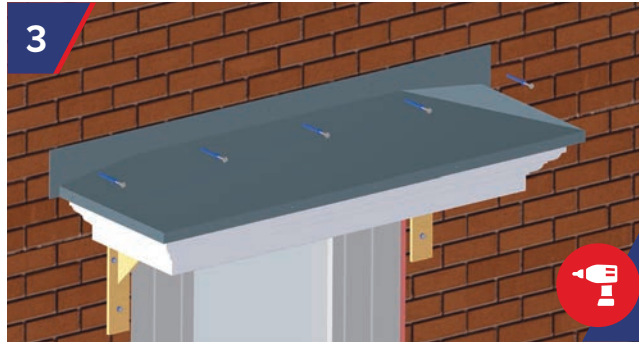




GRP Kneeler supplied with a timber insert. Position Timber Inserts ensuring correct position in relation to the canopy and they are level. Using 10mm drill bit drill through the insert and wall structure to take the StormFix 120 fixing two per insert. Secure the inserts back to the structure. Gallows Brackets are to be fitted following the same method.



Once the StormFix fixing sleeves have been fully inserted into the holes, fully screw the StormFix 80 screw into the sleeves. Screws & sleeves to be concealed using the caps supplied loose with the fixings.



Insert StormFix 80 into the drilled holes. Ensure the canopy is level and maintains a fall to the front.



Once the StormFix fixing sleeves have been fully inserted into the holes, fully screw the StormFix 80 screw into the sleeves. Screws & sleeves to be concealed using the caps supplied loose with the fixings.



Kneeler Brackets inserts are fixed to the canopy soffit in two places on each bracket using wood screws (not supplied). Gallows Brackets to be secured to the soffit following the same method. Please note the Gallows / Kneelers are only supporting the soffit of the canopy and shouldn't be used as the main support.



GRP Kneeler to cloak the timber insert and to be either bonded into position or screw fixed from the side into the timber insert. Canopy GRP upstand must be over flashed in lead or mastic sealed back to the structure.