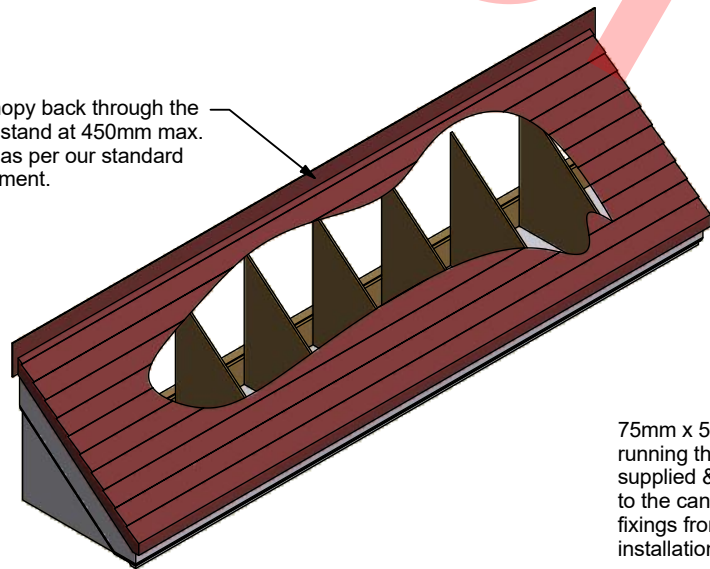
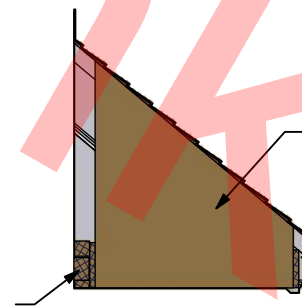


Bolt canopy back through the GRP upstand at 450mm max. centres as per our standard arrangement.



75mm x 50mm contractors rail running the length of the canopy supplied & fitted by others prior to the canopy to allow for soffit fixings from beneath during installation at 300mm max. centres.

A-A ( 1 : 25 )



Timber frame including baffles supplied & fitted by Stormking.

REV	DESCRIPTION	DATE	AUTHOR
A.2	Was Off Sliding Fences, New Tool Note Changed To New	24/02/2021	danpriest
A.1	1st Production Issue	19/11/2014	danpriest
A	1st Issue	06/11/2014	danpriest

REVISION HISTORY



Description  
**Tile Effect Lean To Canopy**  
**3743mm x 795mm**

Designed by	Date	Manufacture Notes 1. New.
danpriest	05/11/2014	
Scale	Checked	
	RS	

Approved	Date	Drawing Number		
GP	18/11/2014	1411004		
Manuf. App	Manuf. App	Sheet	Of	Revision
DP	24/02/2021	1	1	A.2