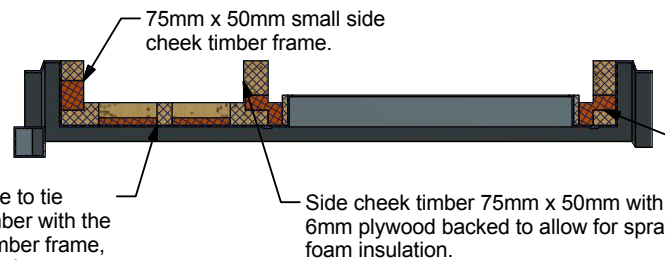


70mm x 36mm truss timber supplied & fitted by Stormking, the rest of the dormer roof to be constructed on site by the roof contractor.



75mm x 50mm front frame to tie the middle side cheek timber with the small right hand cheek timber frame, with light spray foam covering.

Side cheek timber 75mm x 50mm with 6mm plywood backed to allow for spray foam insulation.

75mm x 50mm side cheek timbers supplied & fitted by Stormking including spray foam insulation.

A-A ( 1 : 25 )

Auxiliary View ( 1 : 35 )

A	1st Issue	27/07/2017	Dan P
REV	DESCRIPTION	DATE	AUTHOR

REVISION HISTORY

Approved	Date	Drawing Number	1707063	
Manuf. App	Manuf. App	Sheet	Of	Revision
		1	1	A



Amington Point, Sandy Way, Amington Ind. Est, TAMWORTH, Staffordshire, B77 4ED

Description  
**GRP Apex Dormer Left Hand Slope**  
**925mm x 750mm**

Designed by	Date	Manufacture Notes 1. New
Dan P	26/07/2017	
Scale	Checked	
	PO	